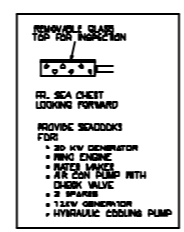
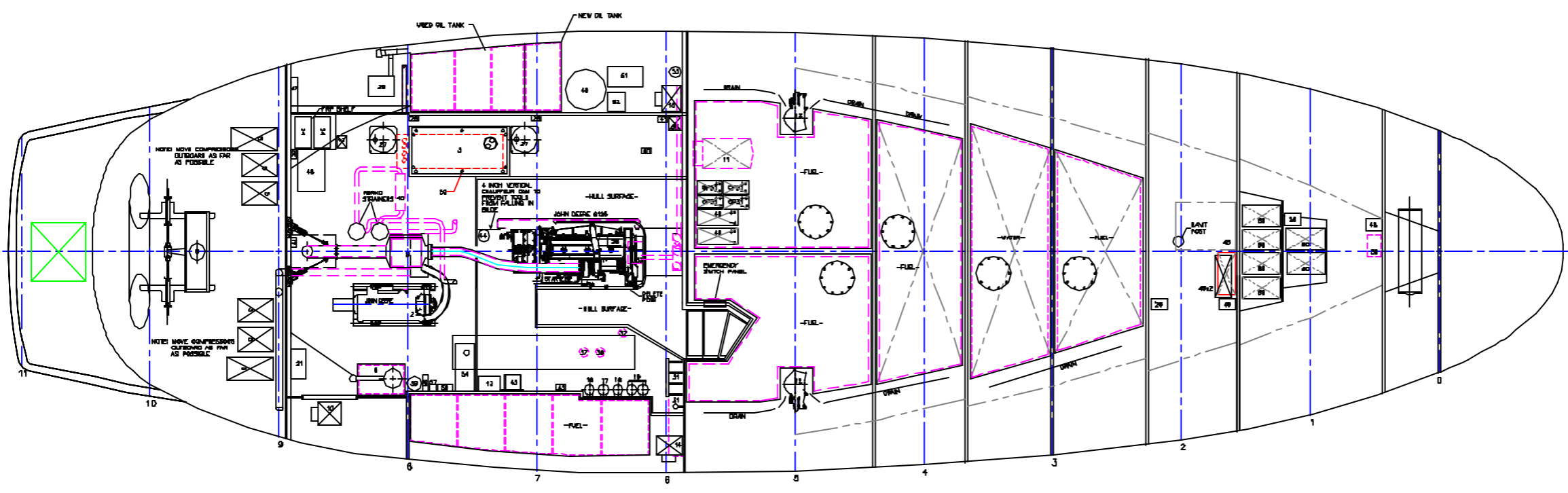


MACHINERY PROFILE
1/2"=1'-0"

- | | | |
|---------------------------------|------------------------------|--|
| 1. MAIN ENGINE | 23. N/A | 43. SEAIRY BOTTLE |
| 2. WIND ENGINE | 24. AUTO RUST PUMP | 44. FRESH WATER OUTLET |
| 3. HYDRAULIC LIGHTS 28KV @ 60HZ | 25. DIE OIL PUMP | 45. 1/2" TRICE INVERTER 1 & 2 |
| 4. AIR CON COMPRESSORS | 26. SW BLZE PUMP | 46. VILLAGE MAINS 800 GPD WATER MAHER X 1 |
| 5. HYDRAULIC RESERVOIR | 27. N/A | 47. FRESH WATER PUMP |
| 6. N/A | 28. AIR OILSUIT BREAKER | 48. FRESH WATER BOTTLE |
| 7. N/A | 29. TOILET PUMP | 49. WATER HEATER |
| 8. MAIN ENGINE MUFFLER | 30. AIR OIL WASH PUMP | 50. HYDRAULIC OIL NEEL COOLER |
| 9. HYDRAULIC TANK | 31. FUEL WATERHEATER | 51. DIESEL WATER PUMP |
| 10. STABILIZER ACTUATORS | 32. AIR CON PUMP RELAY BOX | 52. BACKUP WATER PUMP |
| 11. TWIN DIEG COOLED | 33. DIEZEL PUMP | 53. FRESH WATER FILTER |
| 12. EXHAUST BLOWER | 34. DIEZEL MANFOLD | 54. HYDRAULIC POWERED ALTERNATOR |
| 13. N/A | 35. N/A | 55. N/A |
| 14. WIND ENGINE FUEL FILTER | 36. FUEL TRANSFER/BOOST PUMP | 56. 1/4 WATT BATTERY CHARGER |
| 15. WIND CON. FUEL FILTER | 37. AIR OIL VACUUM SYSTEM | 57. VOLTAGE REGULATOR |
| 16. MAIN FUEL FILTER | 38. ALTERNATOR BATTERIES | 58. ALTERNATOR BATTERIES |
| 17. N/A | 39. DIEZEL CHEST | 59. N/A |
| 18. N/A | 40. NO OUTLETS | 60. STABILIZER CONTROL VALVE ON RUBBER PAD |
| 19. N/A | 41. AIR CON COOLING PUMP | |



NOTES:
 1. ALL INTERIUM CONSTRUCTION MATERIALS TO BE RECLASSIFIED PROVIDED BY TISSARD THIS INCLUDES FLOORING, VERTICAL SECTIONS, BEAMS AND SHELDING.
NO WOOD IN E/R EXCEPT FND. BULKHEAD AND OVERHEAD
 2. ALL BILGE CONSTRUCTION MATERIAL TO BE RECLASSIFIED PROVIDED BY TISSARD THIS INCLUDES ALL HEIGHTS FOR PUMPS, BATTERY BOXES, ETC.
NO WOOD IN BILGES EXCEPT BULKHEADS
 3. ALL BILGE CONSTRUCTION MATERIAL IN LAZ. BUSTLE OR SANIT LOCKER TO BE RECLASSIFIED.
NO WOOD IN LAZ. BUSTLE OR CHAIN LOCKER



MACHINERY PLAN
1/2"=1'-0"



NORDHAVN 62 MACHINERY LAYOUT

THIS PLAN REPRESENTS DESIGN AND CONSTRUCTION ELEMENTS OF A VESSEL DEVELOPED BY PACIFIC ARMY ENTERPRISES AND IS TO BE USED FOR VESSEL CONSTRUCTION IN ACCORDANCE WITH THE PLAN. ANY UNAUTHORIZED USE OR REPRODUCTION IN ANY FORM WITHOUT THE WRITTEN CONSENT OF PACIFIC ARMY ENTERPRISES IS PROHIBITED.

| REV | DATE | DESCRIPTION | BY | CHKD |
|-----|----------|-------------|----|------|
| 1 | 08-28-02 | ISSUED | | |
| 2 | 08-28-02 | REVISED | | |